

## SITAC Card's before ↔ after

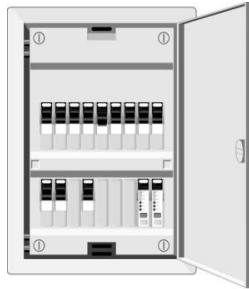
SITAC CARDS® repolarize the whole power supply system in an apartment (A6 or A5) or in a single-family home (size A5 or A4 depending on the insensitivity). Since 1995 they are not only applied in households but also in salesrooms, office buildings and industrial plants. Their virtues never cease to amaze all users !



Along with all the other BIOTAC LINE® tachyon products we developed since 1995, the SITAC CARD's® might probably feature one of the biggest potentials for the personal well-being !

### The application is very easy :

Fix the laminated SITAC Card® with a scotch tape inside the fuse box or stick the card directly on the fuses. The cards might also be placed directly behind the electric meter.



But 100% assured that after the application of this tachyonized card all the devices that are plugged in and all the electric leads feature a so called right-spin, bating microwaves.

For different reasons, on which we do not want to dwell on in this leaflet, we highly recommend to renounce using this "kitchen aid".

Why don't you just ask your kinesiologue ?

## Additional products E-Smog protection

Our partner homepage [www.biotac-tecline.com](http://www.biotac-tecline.com) provides you with detailed information about all the tachyon products conceived for this topic:

- AURA Shield - pendant
- Handy Chip - for mobile phones
- BT Chips - for Bluetooth devices
- Monitor Disc - für flat screens
- Gold Card - for your personal protection
- PC Card - for laptops
- IMERA Disc - against power lines
- PHAROS II - protects from Wi-Fi & W-LAN
- MOTAC Electro - for your automobile

### Scientific studies

Since the beginning of our activities in 1995 we regularly state that due to mental blockages on the part of scientist it seems hard to obtain acceptance towards the tachyon products we developed. In order to share important details with the general public it is very important for our team to spread the information about tachyon energy. We try to undergird them by means of convincing physical proves. Further information is published on our homepage.

Thanks a lot for your interest !

**BIOTAC CONSULTING**

SERVICES FENG SHUI GÉOLOGIE DÉVELOPPEMENT TACHYONS PRODUITS PHILOSOPHIE PROFIL

**Champ Belluet 18** **CH-1807 Blonay**

**TEL +41 (0)21 943 38 74** **FAX (0)21 943 38 73**

**[www.biotac.ch](http://www.biotac.ch)** **[info@biotac.ch](mailto:info@biotac.ch)**

# SITAC CARD

**... suppresses E-Smog of  
electric leads ...**

**in your work area  
and in your living area**



## Internal electric smog electric leads

E-Smog not only is produced by mobile phone antennas, power lines, satellite dishes and lines for tram, trains and buses: E-Smog surrounds us also in our living and work area. E-Smog is not only emitted by all the plugged in electric and electronic devices but also by all the electric leads that are laid in the walls.

As the cables of the electric leads mainly are made with isolated copper wires you might picture that in all your walls antenna-like devices are to be found.

The fact that stretched wires act like antennas and catch signals has been proved on a rainy November 11<sup>th</sup> in 1886 by the German physicist Heinrich Hertz. On this exact day he was the first man to prove during an experiment that electromagnetic waves can be sent from a transmitter to a receiver.



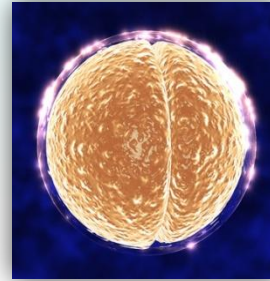
You can therefore be assured that all the electric leads on one hand interfere with all the plugged in devices (lamps, TV, radio clock, refrigerator, hair dryer, vacuum cleaner, etc.) in your living area and in your work place. On the other hand the electric leads resonate with all signals that penetrate from outside the buildings, such as: radio, TV, mobile phone signals, Wi-Fi, etc. etc.

All those signals and currents generate so called "left-spinning" vibrations being very harmful for all living organisms. Day-to-day adults, children and babies are exposed to electric and electronic radiation.



## Left-Spin / Right-Spin desoxyribon-nucleic-acid

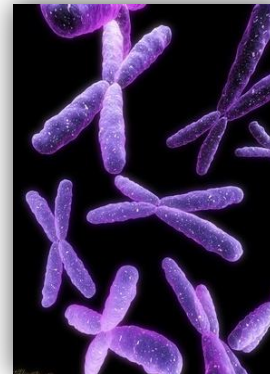
You surely know: in all our body cells, the cell membranes and in the cell nucleus there is an electric flow. Granted, no heavy current, but current that can be measured with modern technical equipment.



Furthermore it has been proved millions of times that external electromagnetic radiation is capable to change the electric potential of body cells and, in addition to that, the concerned cells are depolarized. Scientists are fully aware that due to this fact the concerned cells suffer from a crucial loss of vital bio-photons.

Researches within this extremely spectacular and interesting domain did lead to the discovery of the phenomena called "left- / right-spins". These two terms are used since a while for bio-physical phenomena that can be observed under microscopes.

Moreover, scientist knows since quite a while that the double helix DNA spiral in the chromosomes (situated in the cell nucleus) can display a left-spin or right-spin !



Frequencies polarized with a Left-spin feature degenerative effects and are "responsible" for tumors, malignant cells and cancer.

Right-spinning vibrations, which for the most part are traceably only in tiniest intensities contain euphoriant and life promoting properties ! If this natural spin is depolarized by E-Smog, cell disorder, chaos and degeneration occurs.

## Left-Spin / Right-Spin lacto-bacteria

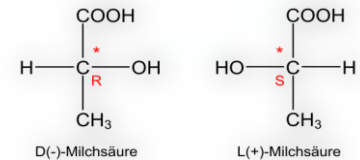
Hereinafter we would like to explain by means of lactic acid how vigorous our organism reacts on right-spin and left-spin vibration

Lactic acid is an organic acid which exist in many herbal and animal organisms and in each human cell. As lactic acid features preservative properties it is used since years to gently preserve vegetable, fruit and dairy products.

Lactic acid stimulates the actions of the bowels, the digestion and promotes the preservation of a healthy gut flora. Indeed, only **right-spinned** lactic acid is healthy for humans !

The lactic acid molecule contains a so called asymmetric carbon atom; i.e. four different radicals are bounded to a carbon atom; resulting in turn that there exist two similar molecules:

right-spinned lactic acid L(+)-  
and  
left-spinned D(-) lactic acid



As right-spinned lactic acid represents a normal component in the human body and is formed e.g. during the depletion of sugar in the muscles, left-spinned lactic acid is only formed by the metabolism of micro-organism.

Science found out that the human organism assimilates the "strange" left-spinned lactic acid much more badly than right-spinned lactic acid and that a high concentration is capable to provoke pathologic disturbances.